



BY APPOINTMENT

THE
Daimler
COMPANY, LTD.,
COVENTRY

MASTER CATALOGUE
OF
SPECIFICATIONS

(For office use only.)



TABLE OF CONTENTS.

	<i>Sheet No.</i>		<i>Sheet No.</i>
Table of Contents and Instructions	207-1	Daimler Saloon de Luxe	207-17
Specification Cover (includes Conditions of Sale and List of Depots)	207-2	Daimler Saloon	207-18
Specification Title Page	207-3	Daimler Saloon "Z"	207-19
45h.p. Daimler Chassis and Table of Dimensions	207-4	Daimler Open Car	207-20
30h.p. Daimler Chassis and Table of Dimensions	207-5	Daimler Two-seater	207-21
21h.p. Daimler Chassis and Table of Dimensions	207-6	B.S.A. Saloon	207-22
35h.p. Daimler Chassis and Table of Dimensions	207-7	B.S.A. Saloon "Z"	207-23
25h.p. Daimler Chassis and Table of Dimensions	207-8	B.S.A. Open Car	207-24
20h.p. Daimler Chassis and Table of Dimensions	207-9	B.S.A. Small Four	207-25
16h.p. Daimler Chassis and Table of Dimensions	207-10	B.S.A. Two-seater	207-26
16h.p. B.S.A. (D and L) Chassis and Table of Dimensions	207-11	Landaulette Seating Plans and Fittings	207-27
16h.p. B.S.A. (E) Chassis and Table of Dimensions	207-12	Daimler Chassis Fittings and Detail	207-28
14h.p. B.S.A. (E and F) Chassis and Table of Dimensions	207-13	B.S.A. Chassis (Daimler Engine) Fittings and Detail	207-29
10h.p. B.S.A. Chassis and Table of Dimensions	207-14	10h.p. B.S.A. Chassis Fittings and Detail	207-30
Daimler Enclosed Landaulette de Luxe	207-15	Description of Daimler Engine and Axle	207-31
Daimler Landaulette de Luxe (Open Front)	207-16	Description of Daimler Four-wheel Brakes	207-32
		Description of Daimler Body Mounting	207-33
REFERENCE SECTION.			
Summary of Daimler Chassis Prices and Specifications	207-34	Summary of B.S.A. Body Prices and Specifications	207-37
Summary of Daimler Body Prices and Specifications	207-35	Table of Daimler Chassis and Body Prices	207-38
Summary of B.S.A. Chassis Prices and Specifications	207-36	Table of B.S.A. Chassis and Car Prices	207-39

INSTRUCTIONS.

All requests for catalogues, whether Daimler or B.S.A., should be answered by sending No. 202. (B.S.A. catalogue, No. 240, is available for use in special cases, but No. 202 covers the Daimler and B.S.A. range.)

Requests for information relating to any particular model should be answered by sending specification sheets selected from the set in this Master Catalogue (No. 207). Copies of any sheet can be obtained on application. This Master Catalogue is bound for convenience of reference in the office, and not for issue to the public.

The sheets comprising the specification for a complete car should be fastened together in the following order, and enclosed in the cover (No. 207-2).—

- 207-3 .. Specification title page, on which the particulars and price of the chassis and body must be typed from the "Summary of Specification Titles" (No. 219).
- Select from 207-15/26 {
 { Illustration of car.
 { Details of construction.
- 207-27 {
 { Seating plan for landaulettes. } (N.B.—Omit if the car is not a landaulette. Strike out
 { Extra fittings for landaulettes. } *de luxe fittings if plain finish*).
- Select from 207-28/30 {
 { Chassis finish and fittings.
 { Chassis detail.
- Select from 207-4/14 {
 { Table of chassis dimensions.
 { Illustration of chassis.
- 207-31 {
 { Description of Daimler engine.
 { Description of Daimler axle.
- 207-32 .. Description of Daimler four-wheel brakes. (N.B.—Omit if chassis is not with four-wheel brakes.)
- 207-33 .. The Daimler body mounting. (N.B.—Omit from B.S.A. 10, F14, E14, and E16, but include with B.S.A. D16 and L16.)



BY APPOINTMENT

SPECIFICATION

45h.p. DAIMLER ENCLOSED LANDAULETTE

(R1 45 - RS1)

THE

Daimler

CO., LTD., COVENTRY

CONDITIONS OF SALE.

DELIVERY.

1.—Delivery is made at Works. Every endeavour is made to meet the wishes of purchasers, but delivery on a specified date cannot be guaranteed. Should the Company be prevented from making delivery owing to any act of God, strikes, lockouts, combinations of workmen, accidents, riots, fire, existence of war, or any cause whatever beyond their control, or should the Company supersede, or alter, or abandon the design or type of vehicle contracted for, it shall be at liberty to cancel or suspend this agreement without incurring any liability or any loss or damage that may arise to the purchasers therefrom.

2.—The Company reserves the right to alter the design or to substitute a corresponding type without notice.

3.—Should the Purchaser not pay to the Company for the vehicle and/or goods on due date, the Company reserves the right, unless mutually arranged, to resell the same at any time after ten days' notice and to claim any loss sustained from the Purchaser.

GUARANTEE.

4.—All motor vehicles and goods manufactured by the Company carry the following express warranties, which exclude all warranties, conditions, and liabilities whatsoever which might exist but for these provisions, namely: In the event of any defect being discovered in any motor vehicle or goods the Company undertakes on return of the defective part or goods, carriage paid, to its Works at Coventry within six months after delivery, to examine same, and should any fault be found on examination by the Company due to defective material or workmanship, the Company will repair the defective part or goods, or supply a new part or goods in place thereof, free of charge.

The Company's responsibility is limited to the terms of these guarantees, and it shall not be answerable for any contingent or resulting liability or loss arising through any defect. These guarantees are not to relate to defects caused by racing, wear and tear, dirt, misuse, or neglect, to motor vehicles or goods the identification numbers or marks of which have been altered or removed, or which have been let out on hire, or which have been sold by any agent for or dealer in motor vehicles to any person not being

an agent for or dealer in motor vehicles at less than the full retail prices set out in the Company's price lists current for the time being. The Company declines responsibility for goods not of its manufacture.

EXHIBITIONS.

5.—The said vehicles and goods shall not be exhibited at any exhibition in the United Kingdom of Great Britain and Ireland without the written permission of the Company other than any exhibition held by the Society of Motor Manufacturers and Traders Limited or approved of by that Society for the exhibition of motor vehicles and goods by its bond-signers. In case of any breach of these provisions the Purchaser shall pay to the Company for every such breach the sum of £250 (Two hundred and fifty pounds) as ascertained and liquidated damages which it is agreed the Company would sustain, or such other sum as the Company may be ordered to pay by the Society of Motor Manufacturers and Traders Limited. Any sum due in respect of such damages may be assigned by the Company to anyone.

6.—If before delivery the Company's prices for such vehicles or goods shall be increased or decreased the altered price shall be deemed to be substituted for the prices mentioned.

7.—This contract may be declared by the Company to be at an end if at any time the Purchaser commits any breach of any of the said conditions, or becomes bankrupt, or compounds, or makes any arrangement with his creditors. In any such case the Company reserves the right to resell the vehicles and/or goods and to claim any loss from the Purchaser.

Vehicles belonging to customers are only driven by our staff at their owners' risk and responsibility.

Sept., 17th, 1924.—This List cancels all previous issues.

SOLE DISTRIBUTORS OF
DAIMLER AND B.S.A. CARS.

THE DAIMLER COMPANY LIMITED,
COVENTRY.

THE DAIMLER COMPANY LIMITED.

Registered Offices and Works
Telegrams: "Daimler, Coventry."

DAIMLER WORKS, COVENTRY.
Telephone: 505 Coventry.

WHOLESALE CENTRES:

LONDON:
CHAPTER STREET HOUSE,
CHAPTER ST., WESTMINSTER S.W.1.
Telephone: 9341 Victoria (2 lines).
Telegrams: "Daimler."

MANCHESTER:
WILMSLOW ROAD.
Telephone: 752-930 Rusholme.
Telegrams: "Daimler."

GLASGOW:
HUGHENDEN ROAD,
GREAT WESTERN ROAD,
Telephone: Western 995-996.
Telegrams: "Daimler."

SERVICE AND REPAIR DEPOTS:

LONDON, N. - - - - HIGHGATE HILL, N.
Telegrams: "Unpassable, Holway." Telephone: 1840 Hornsey.

LONDON, N.W. - - - - THE HYDE, HENDON.
Telegrams: "Daimladepo." Telephone: 250/3 Kingsbury.

BIRMINGHAM - - - - COVENTRY ROAD.
Telegrams: "Daimler." Telephone: 581 Victoria.

LEEDS - - - - HARRISON STREET, BRIGGATE.
Telegrams: "Daimler." Telephone: 21581-21582 Leeds.

GLASGOW - - - - HUGHENDEN ROAD.
Telegrams: "Daimler." Telephone: Western 995-996.

MANCHESTER - - - - WILMSLOW ROAD.
Telegrams: "Daimler." Telephone: 752-930 Rusholme.

NEWCASTLE - - - - WALLSEND-ON-TYNE.
Telegrams: "Daimler." Telephone: 165 & 166 Wallsend.

DAIMLER HIRE LIMITED,

Telegrams: "Daimlerdom, Sowest."

KNIGHTSBRIDGE, S.W.7.

Telephone: 7040 Kensington.

Specification

CHASSIS:- (R1 45) 45h.p. DAIMLER (51.36h.p. R.A.C.
rating). Four-wheel brakes. LOW ENTRANCE
Frame. Polished Radiator.....£1325

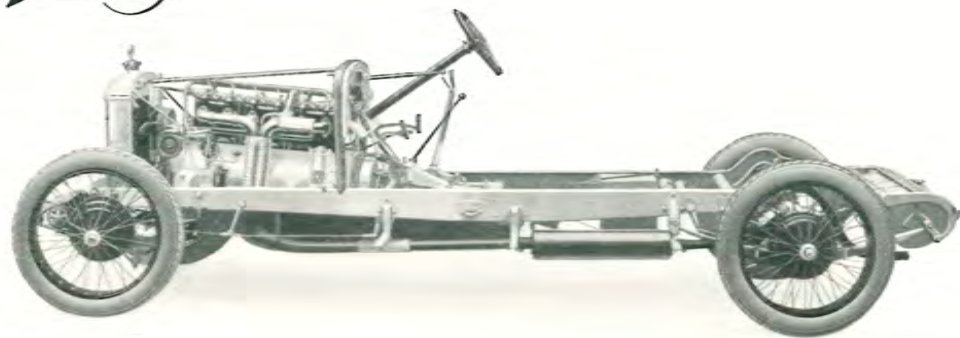
BODY:- (RS 1) ENCLOSED LANDAULETTE DE LUXE
with CHAIRS. De luxe finish.....£ 675
£2000

Constructional detail as described herewith.

Finishing and Fittings in accordance with the Purchase Agreement.



Daimler



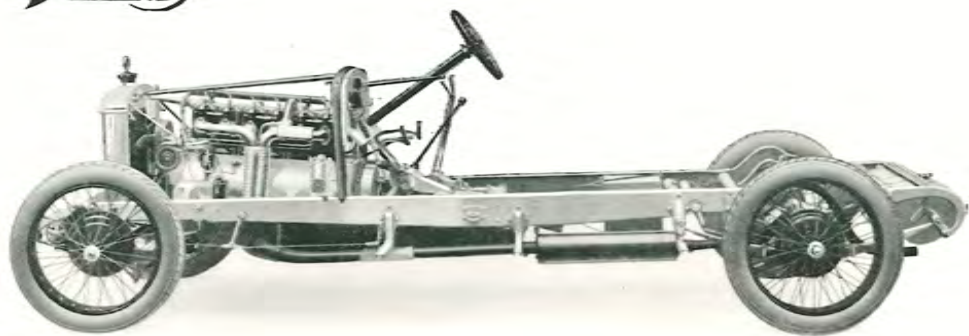
45h.p. CHASSIS.

TABLE OF DIMENSIONS for the 45h.p. DAIMLER CHASSIS.

(N.B.—The column of figures relating to this specification is marked "×")

	A	R	N		A	R	N
Number of cylinders ..	6	6	6	Worm ratios—Open cars ..	10/33	10/33	10/33
Bore, mm. ..	110	117.5	117.5	" Closed cars ..	10/33	10/33	10/33
Stroke, mm. ..	130	130	130	Tyre sizes	{ 895	{ 895	{ 895
R.A.C. rating ..	45	51.36	51.36		{ 150	{ 150	{ 150
Stroke-volume, c.c. ..	7413	8458	8458	Eng. revs. at 30m.p.h.—Open	972	972	972
	ft. in.	ft. in.	ft. in.	" " " Closed	972	972	972
Wheel base	12 2	12 10	13 6	Gear-box ratios—Top (direct)	1	1	1
Wheel track	4 9	5 0	5 0	" " 3rd ..	1.33	1.56	1.56
Turning circle (diameter)	45 0	52 0	55 0	" " 2nd ..	2.06	2.08	2.08
Height (body floor) ..	29	24½	24½	" " 1st ..	3.06	3.24	3.24
Length (chassis)	16 10	17 8	18 4	" " Reverse ..	3.96	3.24	3.24
Width (front wings) ..	6 1	6 3	6 4	Weight (chassis) .. cwt.	33	35	38
Body space (dash to axle)	8 1	8 6	9 2	Battery (12 volts), amp.-hours	80	75	75
Clearance (engine) ..	14	9½	9½	Petrol tank (gallons) ..	17	20	20
" (axle)	9½	9	9	Petrol, m.p.g. (as tested) ..	15	14	14

Daimler



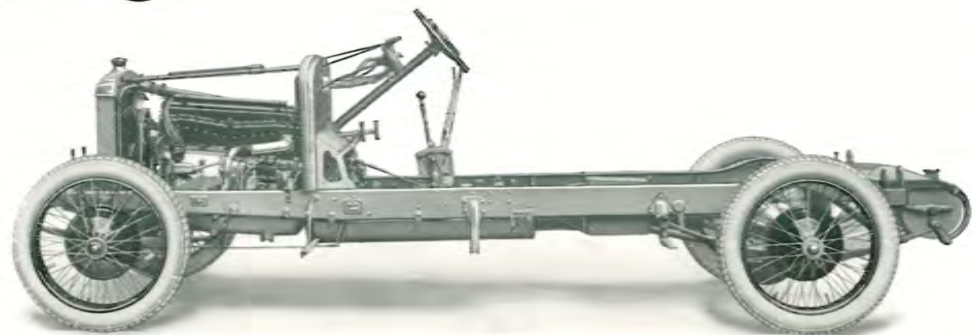
30h.p. CHASSIS.

TABLE OF DIMENSIONS for the 30h.p. DAIMLER CHASSIS.

(N.B.—The column of figures relating to this specification is marked "×")

	A	R	N		A	R	N
Number of cylinders ..	6	6	6	Worm ratios—Open cars ..	9/34	9/34	9/34
Bore, mm.	90	97	97	" Closed cars ..	8/33	8/33	8/33
Stroke, mm.	130	130	130	Tyre sizes	{ 895	{ 895	{ 895
R.A.C. rating	30.13	35	35		{ 135	{ 135	{ 150
Stroke-volume, c.c. ..	4962	5764	5764	Eng. revs. at 30m.p.h.—Open	1154	1154	1112
	ft. in.	ft. in.	ft. in.	" " " Closed	1261	1261	1215
Wheel base	11 10	12 4	13 0	Gear-box ratios—Top (direct)	1	1	1
Wheel track	4 9	5 0	5 0	" " 3rd ..	1.55	1.62	1.62
Turning circle (diameter)	44 0	53 0	55 0	" " 2nd ..	1.99	2.20	2.20
Height (body floor) ..	28	24 $\frac{1}{8}$	25	" " 1st ..	3.05	3.57	3.57
Length (chassis)	16 6	17 2	17 10	" " Reverse ..	3.94	3.57	3.57
Width (front wings) ..	6 1	6 3	6 4	Weight (chassis) .. cwt.	30 $\frac{1}{2}$	32	35
Body space (dash to axle)	8 1	8 6	9 2	Battery (12 volts), amp.-hours	70	75	75
Clearance (engine) ..	13	9	10	Petrol tank (gallons) ..	17	20	20
" (axle)	9	8 $\frac{1}{2}$	9 $\frac{1}{2}$	Petrol, m.p.g. (as tested) ..	17	16	16

Daimler



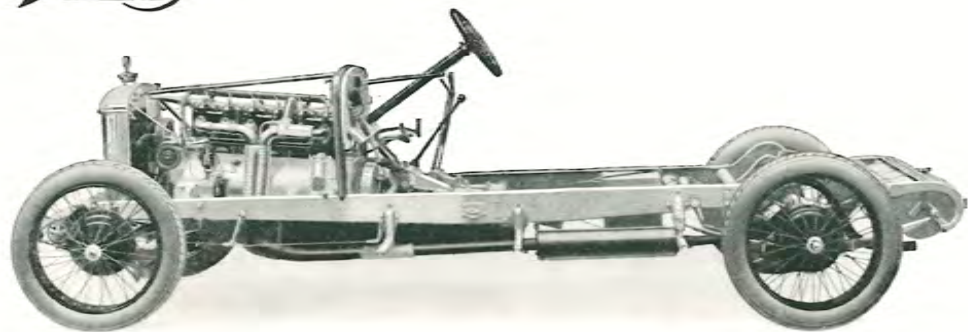
21h.p. CHASSIS.

TABLE OF DIMENSIONS for the 21h.p. DAIMLER CHASSIS.

(N.B.—The column of figures relating to this specification is marked "x")

	A1	A2	A1 and A2
Number of cylinders	6	6	7/36
Bore, mm.	75	81.5	7/36
Stroke, mm.	114	114	895
R.A.C. rating	20.9	24.7	135
Stroke-volume, c.c.	3022	3568	1572
	ft. in.		
Wheel base	11	4	1572
Wheel track	4	9	1
Turning circle (diameter)	43	0	1.54
Height (body floor)		27	2.16
Length (chassis)	15	8	4.01
Width (front wings)	6	1	3.39
Body space (dash to axle)	8	1	
Clearance (engine)		14	
" (axle)		9	
Worm ratios—Open cars			7/36
" " Closed cars			7/36
Tyre sizes			895
Engine revs. at 30m.p.h.—Open cars			1572
" " " Closed "			1572
Gear-box ratios—Top (direct)			1
" " 3rd			1.54
" " 2nd			2.16
" " 1st			4.01
" " Reverse			3.39
Weight (chassis) cwt.			23½
Battery (12 volts), ampere-hours			66
Petrol tank (gallons)			12
Petrol, m.p.g. (as tested)			20

Daimler



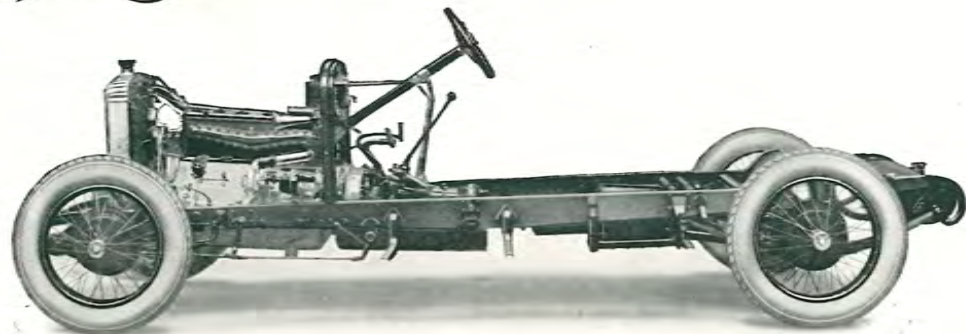
35h.p. CHASSIS.

TABLE OF DIMENSIONS for the 35h.p. DAIMLER CHASSIS.

(N.B.—The column of figures relating to this specification is marked "×")

	C	S	T		C	S	T
Number of cylinders ..	6	6	6	Worm ratios—Open cars ..	9/32	9/32	9/32
Bore, mm.	97	97	97	" " Closed cars	9/32	9/32	9/32
Stroke, mm.	130	130	130	Tyre sizes	{ 895	{ 835	{ 835
R.A.C. rating	35	35	35		{ 135	{ 135	{ 135
Stroke-volume, c.c. ..	5764	5764	5764	Eng. revs. at 30m.p.h.—Open	1086	1120	1120
	ft. in.	ft. in.	ft. in.	" " " Closed	1086	1120	1120
Wheel base	11 10	11 10	12 5	Gear-box ratios—Top (direct)	1	1	1
Wheel track	4 4	4 6	4 6	" " 3rd ..	1.62	1.62	1.62
Turning circle (diameter)	44 0	43 0	45 0	" " 2nd ..	2.20	2.20	2.20
Height (body floor) ..	26½	24½	24½	" " 1st ..	3.57	3.57	3.57
Length (chassis)	15 9	15 8	16 2	" " Reverse ..	3.57	3.57	3.57
Width (front wings) ..	5 5	5 9	5 9	Weight (chassis) .. cwt.	25½	27	30
Body space (dash to axle)	7 9	7 10	8 4	Battery (12 volts), amp.-hours	66	66	66
Clearance (engine) ..	10	8½	8½	Petrol tank (gallons) ..	15	16	16
" (axle)	10	8	8	Petrol, m.p.g. (as tested) ..	17	17	16

Daimler



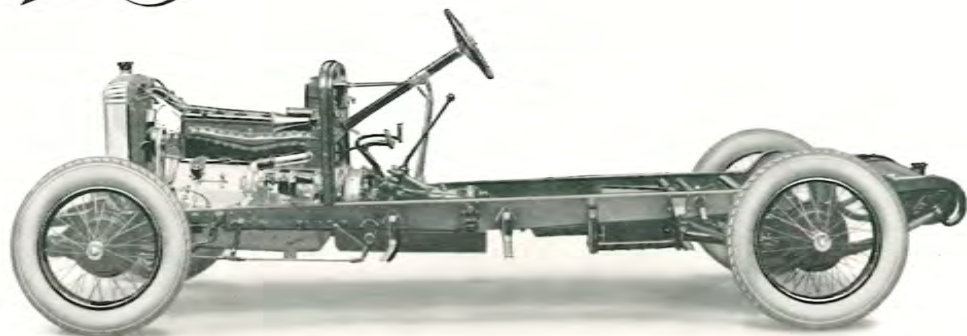
25h.p. CHASSIS.

TABLE OF DIMENSIONS for the 25h.p. DAIMLER CHASSIS.

(N.B.—The column of figures relating to this specification is marked "×")

	C	S	T		C	S	T
Number of cylinders ..	6	6	6	Worm ratios—Open cars ..	8/33	8/33	8/33
Bore, mm.	81.5	81.5	81.5	" " Closed cars	8/35	8/35	8/35
Stroke, mm.	114	114	114	Tyre sizes	820 120	835 135	835 135
R.A.C. rating	24.7	24.7	24.7	Eng. revs. at 30m.p.h.—Open			
Stroke-volume, c.c. ..	3568	3568	3568	" " " Closed	1423	1379	1379
	ft. in.	ft. in.	ft. in.	Gear-box ratios—Top (direct)	1	1	1
Wheel base	11 2	11 4	11 10	" " 3rd ..	1.69	1.60	1.60
Wheel track	4 4	4 6	4 6	" " 2nd ..	2.36	2.50	2.50
Turning circle (diameter)	41 0	41 0	43 0	" " 1st ..	4.00	4.00	4.00
Height (body floor) ..	24	23½	23½	" " Reverse ..	4.00	4.00	4.00
Length (chassis)	15 0	15 1	15 8	Weight (chassis) .. cwt.	20½	22	26
Width (front wings) ..	5 5	5 9	5 9	Battery (12 volts), amp.-hours	66	66	66
Body space (dash to axle)	7 9	7 10	8 4	Petrol tank (gallons) ..	10	12	12
Clearance (engine) ..	11½	9	8½	Petrol, m.p.g. (as tested) ..	20	20	19
" (axle)	8½	8	8				

Daimler



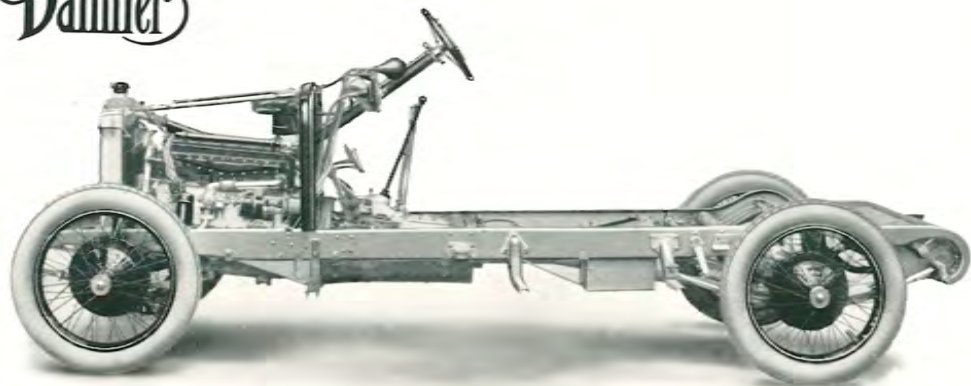
20h.p. CHASSIS.

TABLE OF DIMENSIONS for the 20h.p. DAIMLER CHASSIS.

(N.B.—The column of figures relating to this specification is marked " × ")

	C	S	T		C	S	T
Number of cylinders ..	6	6	6	Worm ratios—Open cars ..	6/35	7/36	7/36
Bore, mm. ..	73.5	73.5	73.5	" " Closed cars ..	6/35	6/35	6/35
Stroke, mm. ..	104	104	104	Tyre sizes	820	820	835
R.A.C. rating ..	20.09	20.09	20.09		120	120	135
Stroke-volume, c.c. ..	2648	2648	2648	Eng. revs. at 30m.p.h.—Open	1898	1673	1621
	ft. in.	ft. in.	ft. in.	" " " Closed	1898	1898	1838
Wheel base ..	10 9	11 1	11 7	Gear-box ratios—Top (direct)	1	1	1
Wheel track ..	4 4	4 6	4 6	" " 3rd ..	1.69	1.60	1.60
Turning circle (diameter)	40 0	40 0	42 0	" " 2nd ..	2.36	2.50	2.50
Height (body floor) ..	24	23	23½	" " 1st ..	4.00	4.00	4.00
Length (chassis) ..	14 8	14 10	15 4	" " Reverse ..	4.00	4.00	4.00
Width (front wings) ..	5 5	5 9	5 9	Weight (chassis) .. cwt.	19½	20	24
Body space (dash to axle)	7 9	7 10	8 4	Battery (12 volts), amp.-hours	66	66	66
Clearance (engine) ..	11½	8½	8½	Petrol tank (gallons) ..	10	12	12
" (axle) ..	8½	7½	8	Petrol, m.p.g. (as tested) ..	24	24	22

Daimler



16h.p. CHASSIS.

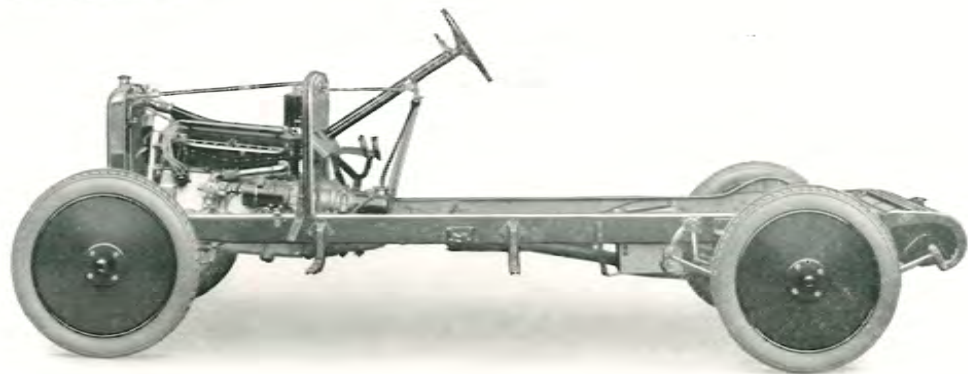
TABLE OF DIMENSIONS for the 16h.p. DAIMLER CHASSIS.

(N.B.—The column of figures relating to this specification is marked "×")

		D	L ₁		D	L ₁	
Number of cylinders	6	6	Worm ratios—Open cars	.. 6/35	7/34	
Bore, mm.	65	65	" " Closed cars	.. 6/37	7/36	
Stroke, mm.	94	94	Tyre sizes	765	30
R.A.C. rating	15.7	15.7			105	5.25
Stroke-volume, c.c.	1872	1872	Engine revs. at 30m.p.h.—Open	1977	1646	
		ft. in.	ft. in.	" " " Closed	2090	1743	
Wheel base	9 9	9 10	Gear-box ratios—Top (direct)	1	1	
Wheel track	4 2	4 4	" " 3rd 1.69	—	
Turning circle (diameter)	38 0	37 0	" " 2nd 2.36	1.89	
Height (body floor)	23	23½	" " 1st 4.00	3.53	
Length (chassis)	13 6	13 6	" " Reverse 4.00	4.28	
Width (front wings)	5 0	5 2	Weight (chassis)	.. cwt. 17	15	
Body space (dash to axle)	7 1	7 1	Battery (12 volts), amp.-hours	66	66	
Clearance (engine)	10½	9½	Petrol tank (gallons) 9	9	
" (axle)	9	8½	Petrol, m.p.g. (as tested)	.. 28	28	

Clutch:—(D) Single plate fabric lined. (L₁) Double plate cork studded.

B.S.A.



16h.p. CHASSIS (Daimler Engine).

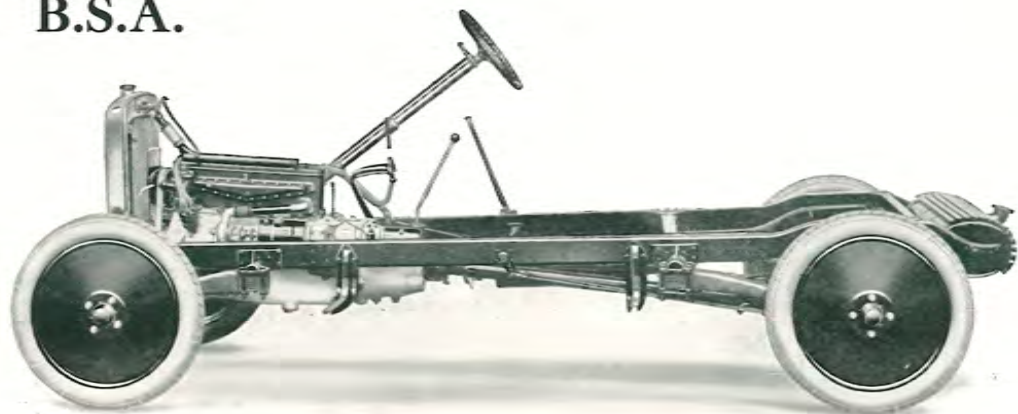
For Coachwork Types D and L.

TABLE OF DIMENSIONS for the 16h.p. B.S.A. CHASSIS.

(N.B.—The column of figures relating to this specification is marked " × ")

			D	L ₂		D	L ₂	
Number of cylinders	6	6	Worm ratios—Open cars	..	7/34	7/34
Bore, mm.	65	65	" " Closed cars	..	7/36	7/36
Stroke, mm.	94	94	Tyre sizes	..	30	30
R.A.C. rating	15.7	15.7			3½	5.25
Stroke-volume, c.c.	1872	1872	Engine revs. at 30m.p.h.—Open		1633	1646
			ft. in.	ft. in.	" " " Closed		1729	1743
Wheel base	9 10	9 10	Gear-box ratios—Top (direct)		1	1
Wheel track	4 2	4 4	" " 2nd	..	1.89	1.89
Turning circle	37 0	37 0	" " 1st	..	3.53	3.53
Height (body floor)	23½	23½	" " Reverse	..	4.28	4.28
Length (chassis)	13 6	13 6	Weight (chassis)	..	cwt. 14	14
Width (front wings)	5 0	5 2	Battery (12 volts), ampere-hours		66	66
Body space (dash to axle)	7 1	7 1	Petrol tank (gallons)	..	9	9
Clearance (engine)	11½	9½	Petrol, m.p.g. (as tested)	..	28	28
" (axle)	8½	8½				

B.S.A.



16h.p. CHASSIS (Daimler Engine).

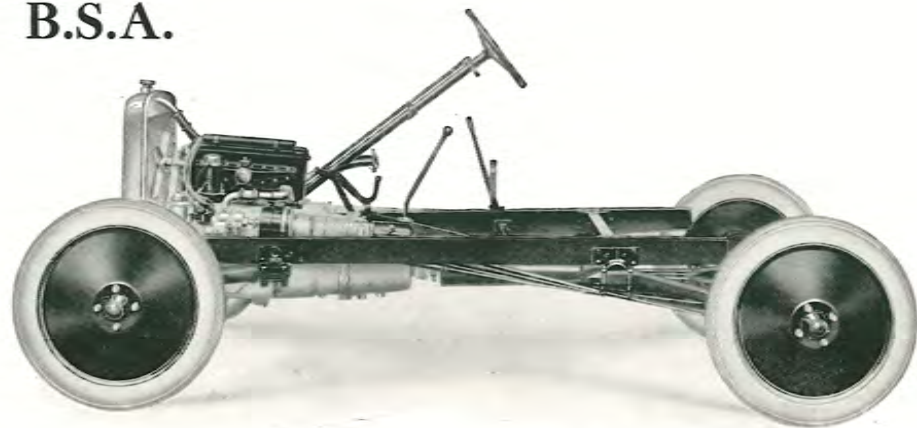
For coachwork Type E.

TABLE OF DIMENSIONS for the 16h.p. B.S.A. CHASSIS.

(N.B.—The column of figures relating to this specification is marked "×")

	E		E
Number of cylinders.. .. .	6	Worm ratios—Open cars	7/34
Bore, mm.	65	" " Closed cars	7/36
Stroke, mm.	94	Tyre sizes	28
R.A.C. rating	15.7		3½
Stroke-volume, c.c.	1872	Engine revs. at 30m.p.h.—Open cars ..	1749
	ft. in.	" " " Closed cars ..	1852
Wheel base	9 3	Gear-box ratios—Top (direct)	1
Wheel track	4 0	" " 2nd	1.89
Turning circle (diameter)	38 0	" " 1st	3.53
Height (body floor)	22	" " Reverse	4.28
Length (chassis)	12 9	Weight (chassis) cwt.	13¼
Width (front wings)	4 8	Battery (12 volts), ampere-hours ..	44
Body space (dash to axle)	6 8	Petrol tank (gallons)	7
Clearance (engine)	9½	Petrol, m.p.g. (as tested)	28
" (axle)	7½		

B.S.A.



14h.p. CHASSIS (Daimler Engine).

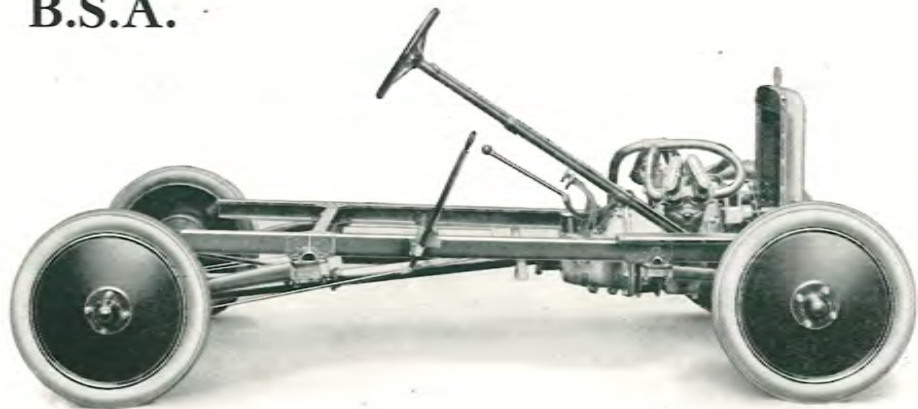
For coachwork Types E and F.

TABLE OF DIMENSIONS for the 14h.p. B.S.A. CHASSIS.

(N.B.—The column of figures relating to this specification is marked "×")

		E	F		E	F
Number of cylinders		4	4	Worm ratios—Open cars ..	7/34	7/34
Bore, mm.		73.5	73.5	" " Closed cars ..	7/36	—
Stroke, mm.		104	104	Tyre sizes	{ 28	28
R.A.C. rating		13.4	13.4		{ 3½	3½
Stroke-volume, c.c.		1765	1765	Engine revs. at 30m.p.h.—Open	1749	1749
		ft. in.	ft. in.	" " " Closed	1852	—
Wheel base		8 10	8 0	Gear-box ratios—Top (direct)..	1	1
Wheel track		4 0	4 0	" " 2nd	1.89	1.89
Turning circle (diameter) ..		37 6	35 0	" " 1st	3.53	3.53
Height (body floor)		22	21	" " Reverse	4.28	4.28
Length (chassis)		12 4	10 5	Weight (chassis) .. cwt.	12½	11½
Width (front wings)		4 8	4 8	Battery (12 volts), ampere-hours	44	44
Body space (dash to axle) ..		6 8	6 1	Petrol tank (gallons)	7	5½
Clearance (engine)		9½	8½	Petrol, m.p.g. (as tested) ..	30	32
" (axle)		7½	8½			

B.S.A.



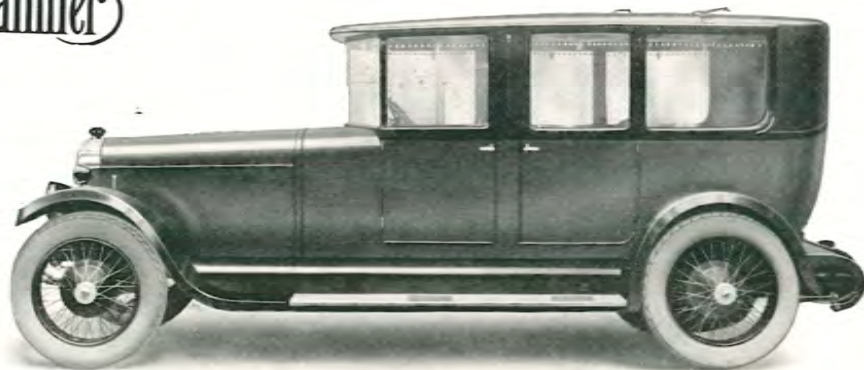
10h.p. CHASSIS.

TABLE OF DIMENSIONS for the 10h.p. B.S.A. CHASSIS.

(N.B.—The column of figures relating to this specification is marked "×")

	F		F
Number of cylinders.. .. .	2	Worm ratios—Open cars	7/34
Bore, mm.	89.75	Tyre sizes	710
Stroke, mm.	85		90
R.A.C. rating	9.99	Engine revs. at 30m.p.h.—Open cars ..	1797
Stroke-volume, c.c.	1075	Gear-box ratios—Top (direct)	1
	ft. in.	" " 2nd	1.89
Wheel base	8 0	" " 1st	3.53
Wheel track	4 0	" " Reverse	4.28
Turning circle (diameter)	35 0		
Height (body floor)	21	Weight (chassis) cwt.	10½
Length (chassis)	10 5	Battery (6 volts), ampere-hours	75
Width (front wings)	4 8	Petrol tank (gallons)	5½
Body space (dash to axle)	6 1	Petrol, m.p.g. (as tested)	40
Clearance (engine)	9		
" (axle)	8½		

Daimler



ENCLOSED LANDAULETTE DE LUXE.

DAIMLER ENCLOSED LANDAULETTE DE LUXE.

- SEATS *See separate plan.*
- DOORS Four, giving access to front and back seats from either side. Safety catches. Private locks.
- UPHOLSTERY .. Interior in leather or cloth to choice from Daimler patterns, with silk laces. Cushions and back stuffed with selected horsehair, comfortable in profile and well sprung. Pile carpet on felt underlining.
- FINISHING Interior woodwork ebony finish. Metal fittings plated to match chassis. Spring roller silk blinds to all windows except front. Arm slings. Pillar pulls. Pillar ascending handles. Speaking tube. Ash tray. Driving mirror. Roof lamp. Licence holder.
- CONSTRUCTION .. Framed in ash, with mouldings. Panelled in tinned steel. Folding head with spring-assisted lifting mechanism. Head covered with best quality enamelled hide and joined to roof by convenient toggle levers and effective water plate. Steel wings with inside mud gutter. Platform steps covered with rubber and edged with metal. Step mats to each door. Steel valances.
- MOUNTING On Daimler body frame, hinged to chassis at front and supported on rubber buffers at the back. Gives exceptional comfort to the passengers and increases the durability of the coachwork.
- PAINTING In colour to choice from Daimler range. Black wings, valances, tank, and wheels.

Daimler



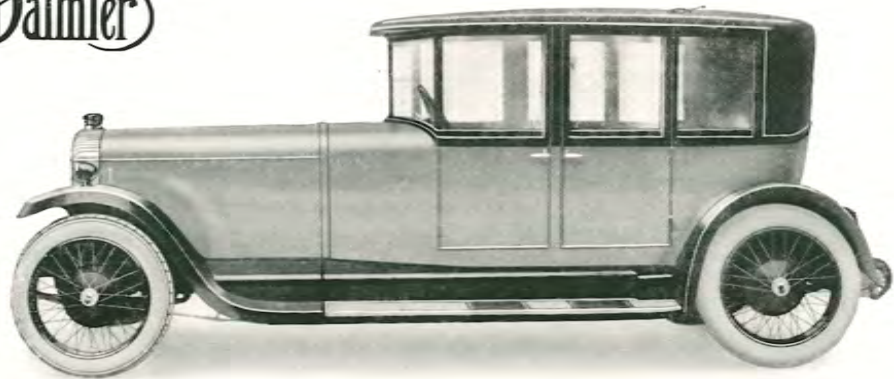
LANDAULETTE DE LUXE.

(Open Front.)

DAIMLER LANDAULETTE DE LUXE.

- SEATS *See separate plan.*
- DOORS Four, giving access to front and back seats from either side. Safety catches. Private locks.
- UPHOLSTERY Interior in leather or cloth to choice from Daimler patterns, with silk laces. Cushions and back stuffed with selected horsehair, comfortable in profile and well sprung. Pile carpet on felt underlining.
- FINISHING Interior woodwork ebony finish. Metal fittings plated to match chassis. Spring roller silk blinds. Arm slings. Pillar pulls. Pillar ascending handles. Speaking tube. Ash tray. Roof lamp. Licence holder.
- CONSTRUCTION Framed in ash, with mouldings. Panelled in tinned steel. Folding head with spring-assisted lifting mechanism. Head covered with best quality enamelled hide and joined to roof by convenient toggle levers and effective water plate. Steel wings with inside mud gutter. Platform steps covered with rubber and edged with metal. Step mats to each door. Steel valances.
- MOUNTING On Daimler body frame, hinged to chassis at front and supported on rubber buffers at the back. Gives exceptional comfort to the passengers and increases the durability of the coachwork.
- PAINTING In colour to choice from Daimler range. Black wings, valances, tank, and wheels.

Daimler

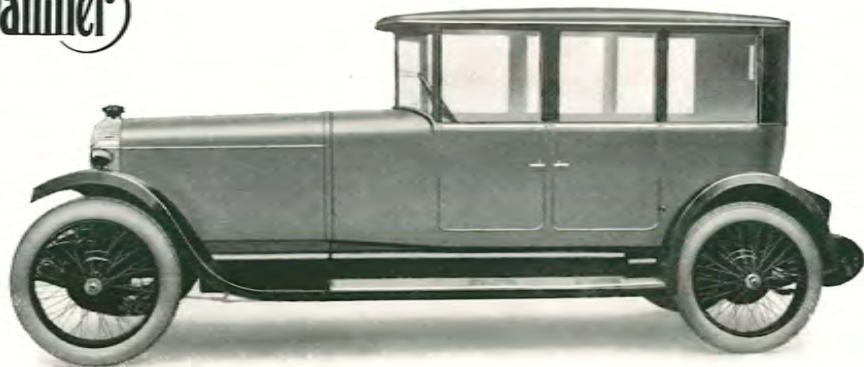


SALOON DE LUXE.

DAIMLER SALOON DE LUXE.

- SEATS Chair seats in front. The driver's seat is adjustable.
- DOORS Four, giving independent access to front and back seats. Safety catches. Private locks.
- UPHOLSTERY In leather or cloth to choice from Daimler patterns, with silk laces. Cushions and backs stuffed with selected horsehair, comfortable in profile and well sprung. Pile carpet on felt underlining.
- FINISHING Interior woodwork ebony finish. Metal fittings plated to match chassis. Pillar pulls. Ash tray. Interior driving mirror. Roof lamp. Licence holder.
- CONSTRUCTION Framed in ash, with mouldings. Panelled in tinned steel. Steel wings with inside mud gutter. Platform steps covered with rubber and edged with metal. Step mat to each door. Steel valances.
- MOUNTING On Daimler body frame, hinged to chassis at front and supported on rubber buffers at the back. Gives exceptional comfort to the passengers and increases the durability of the coachwork.
- PAINTING In colour to choice from Daimler range. Black wings, valances, tank, and wheels.

Daimler

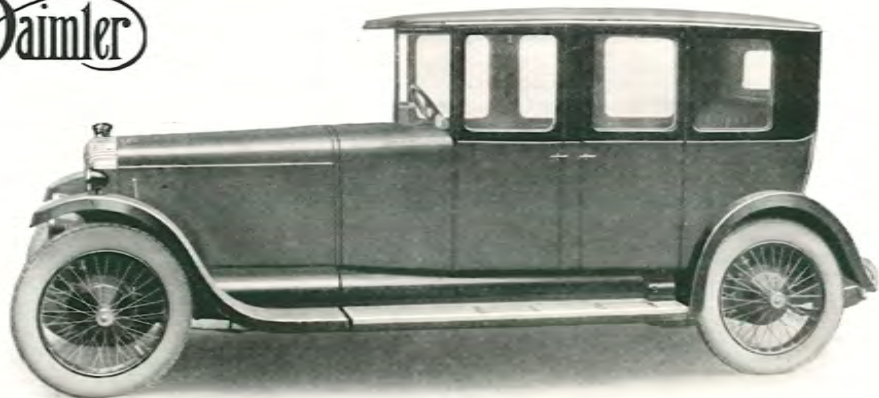


THE SALOON.

DAIMLER SALOON.

- SEATS Chair seats in front. The driver's seat is adjustable.
- DOORS Four, giving independent access to front and back seats. Safety catches.
- UPHOLSTERY In leather or cloth to choice from Daimler patterns. Cushions and backs stuffed with selected horsehair, comfortable in profile and well sprung. Pile carpet on felt underlining.
- FINISHING Interior woodwork, ebony finish. Metal fittings plated to match chassis. Ash tray. Interior driving mirror. Roof lamp. Licence holder.
- CONSTRUCTION Framed in ash, panelled in aluminium. Fixed head covered with black waterproof fabric. Steel wings with inside mud gutter. Platform steps covered with rubber and edged with metal. Step mat to each door. Steel valances.
- MOUNTING On Daimler body frame, hinged to chassis at front and supported on rubber buffers at the back. Gives exceptional comfort to the passengers and increases the durability of the coachwork.
- PAINTING In colour to choice from Daimler range. Black wings, valances, tank, and wheels.

Daimler

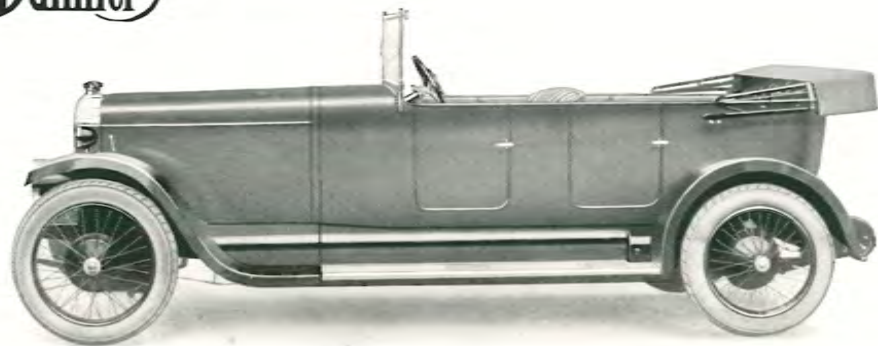


SALOON "Z" (fabric panelled).

DAIMLER SALOON "Z" (fabric panelled).

- SEATS Chair seats in front. The driver's seat is adjustable.
- DOORS Four, giving independent access to front and back seats. Safety catches.
- UPHOLSTERY In cloth to choice from Daimler patterns. Cushions and backs well stuffed with selected horsehair, comfortable in profile and well sprung. Pile carpet on felt underlining.
- FINISHING Interior woodwork ebony finish. Metal fittings plated to match chassis. Ash tray. Interior driving mirror. Licence holder.
- CONSTRUCTION Framed in ash, flexibly jointed, panelled in weather proof fabric, colour to choice from Daimler range. This form of construction gives a light closed body that is exceptionally silent and easily cleaned. Fixed head covered in black weatherproof fabric. Steel wings with inside mud gutter. Platform steps covered with rubber and edged with metal. Step mats to each door. Steel valances.
- MOUNTING On Daimler body frame, hinged to chassis at front and supported on rubber buffers at the back. Gives exceptional comfort to the passengers and increases the durability of the coachwork.
- PAINTING Bonnet and scuttle in colour to choice from Daimler range. Black wings, valances, tank, and wheels.

Daimler

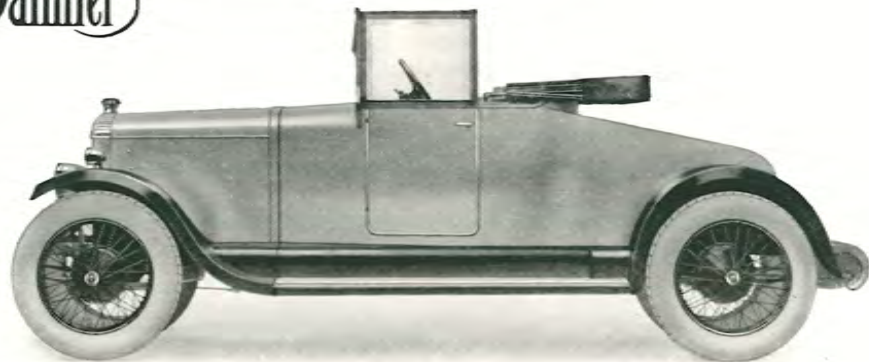


OPEN CAR.

DAIMLER OPEN CAR.

- DOORS Four, with safety catches.
- UPHOLSTERY .. In leather to choice from Daimler patterns. Cushions and backs stuffed with selected horsehair, comfortable in profile and well sprung. Fibre mats on front and rear floorboards.
- FINISHING Metal fittings plated to match chassis. Licence holder.
- HOOD Balanced one-man type. When erected front of hood clamps to top moulding of windscreen. Complete side screens. Hood cover.
- WINDSCREEN .. Lower part fixed, upper part adjustable.
- CONSTRUCTION .. Framed in ash, panelled in aluminium. Steel wings with inside mud gutters. Platform steps covered with rubber and edged with metal. Step mats to each door. Steel valances.
- MOUNTING On Daimler body frame, hinged to chassis at front and supported on rubber buffers at the back. Gives exceptional comfort to the passengers and increases the durability of the coachwork.
- PAINTING In colour to choice from Daimler range. Black wings, valances, tank, and wheels.

Daimler

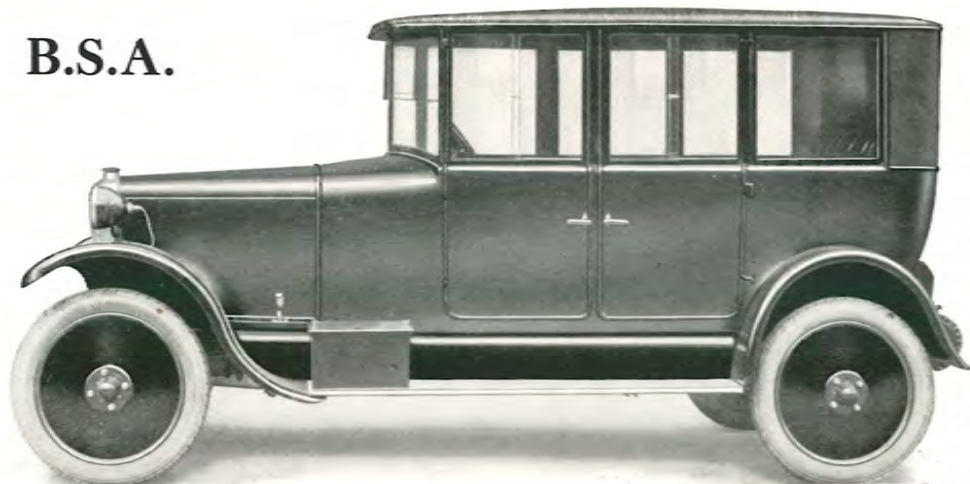


THE TWO-SEATER.

DAIMLER TWO-SEATER.

- DOORS Two, with safety catches.
- UPHOLSTERY .. In leather to choice from Daimler patterns. Cushions and backs stuffed with selected horsehair, comfortable in profile and well sprung. Fibre mats on floorboards.
- FINISHING Metal fittings plated to match chassis. Licence holder.
- HOOD Balanced one-man type. When erected front of hood clamps to top moulding of windscreen. Complete side screens. Hood cover.
- WINDSCREEN .. Lower part fixed, upper part adjustable.
- CONSTRUCTION .. Framed in ash, panelled in aluminium. Steel wings with inside mud gutters. Platform steps covered rubber and edged with metal. Step mats to each door. Steel valances.
- MOUNTING On Daimler body frame, hinged to chassis at front and supported on rubber buffers at the back. Gives exceptional comfort to the passengers and increases the durability of the coachwork.
- PAINTING In colour to choice from Daimler range. Black wings, valances, tank, and wheels.

B.S.A.

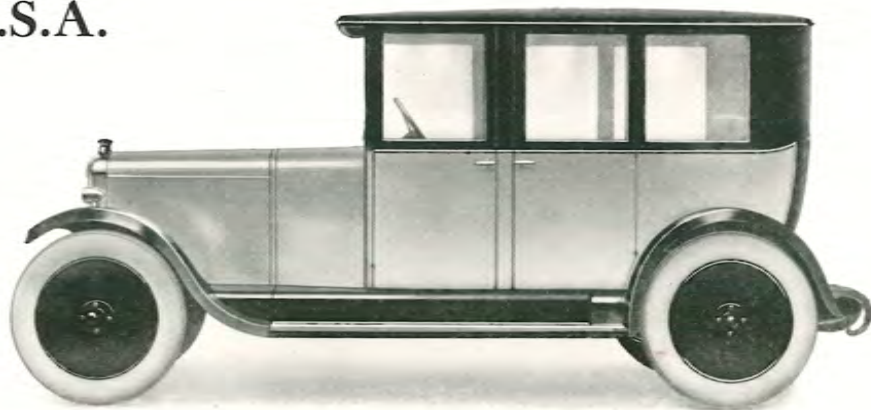


THE SALOON.

B.S.A. SALOON.

- SEATS Chair seats in front. The driver's seat is adjustable.
- DOORS Four, giving independent access to front and back seats. Safety catches.
- UPHOLSTERY In dark blue leather. Cushions and backs stuffed with selected horsehair, comfortable in profile and well sprung. Pile carpet on felt underlining.
- FINISHING Metal fittings plated to match chassis. Ash tray. Interior driving mirror. Licence holder.
- CONSTRUCTION Framed in ash, panelled in aluminium. Fixed head covered with black waterproof fabric. Steel wings. Platform steps covered with aluminium. Steel valances.
- PAINTING In dark blue. Black wings, valances, tank, and wheels.

B.S.A.

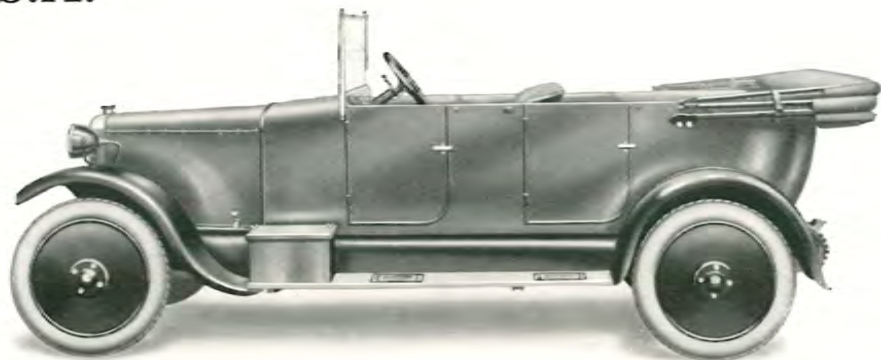


SALOON "Z" (fabric panelled).

B.S.A. SALOON "Z" (fabric panelled).

- SEATS Chair seats in front. The driver's seat is adjustable.
- DOORS Four, giving independent access to front and back seats. Safety catches.
- UPHOLSTERY ... In cloth. Cushions and backs stuffed with selected horsehair, comfortable in profile and well sprung.
Pile carpet on felt underlining.
- FINISHING Metal fittings plated to match chassis. Interior driving mirror. Licence holder.
- CONSTRUCTION .. Framed in ash, panelled in weatherproof fabric. Steel wings. Platform steps covered with aluminium. Steel valances.
- PAINTING Bonnet and scuttle in colour. Black wings, valances, tank, and wheels.

B.S.A.

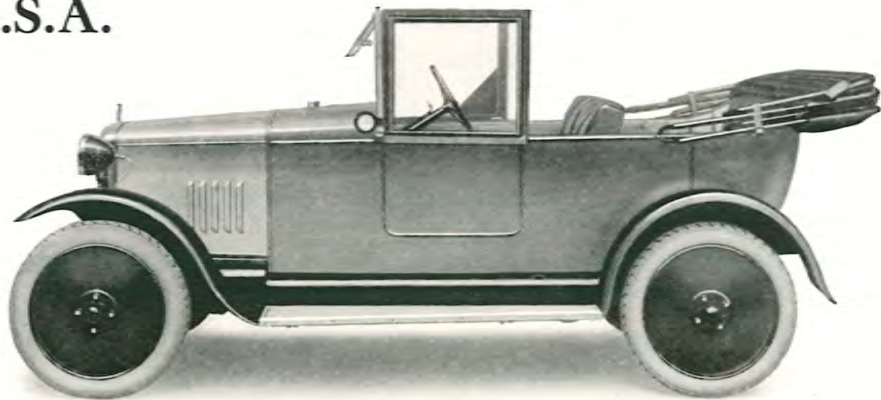


THE OPEN CAR.

B.S.A. OPEN CAR.

- UPHOLSTERY .. In dark blue leather. Cushions and backs stuffed with selected horsehair, comfortable in profile and well sprung. Fibre mats on front and rear floorboards.
- FINISHING Metal fittings plated to match chassis. Licence holder.
- HOOD Balanced one-man type. When erected front of hood clamps to top moulding of windscreen. Complete side screens.
- WINDSCREEN .. Lower part fixed, upper part adjustable.
- CONSTRUCTION .. Framed in ash, panelled in aluminium. Steel wings. Platform steps covered with aluminium. Steel valances.
- PAINTING In dark blue. Black wings, valances, tank, and wheels.

B.S.A.



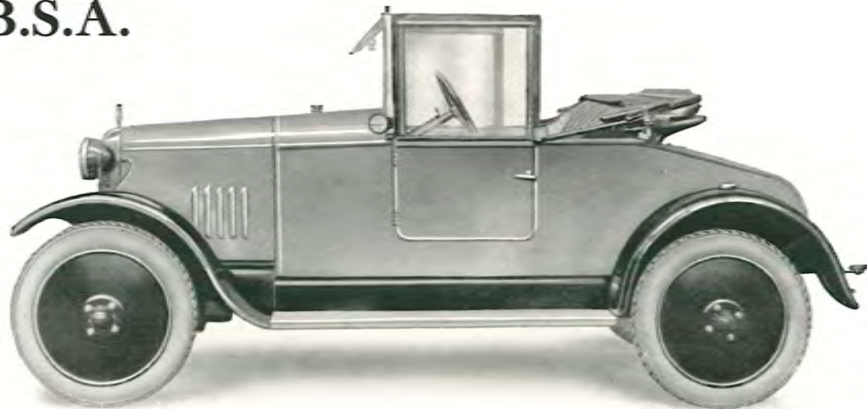
SMALL FOUR.

Available on 14h.p. and 10h.p. chassis.

B.S.A. SMALL FOUR.

- UPHOLSTERY .. In dark blue leather cloth. Cushions and backs stuffed with selected horsehair, comfortable in profile and well sprung. Fibre mat on front floorboard.
- FINISHING Metal fittings plated to match chassis. Instrument board, with map box. Licence holder.
- HOOD Balanced one-man type. When erected front of hood clamps to top moulding of windscreen. Complete side screens.
- WINDSCREEN .. Lower part fixed, upper part adjustable.
- CONSTRUCTION .. Framed in ash, panelled in aluminium. Steel wings. Platform steps covered with aluminium. Steel valances.
- PAINTING In grey. Polished bonnet. Black wings, valances, tank, and wheels.
- TOOL SPACE .. Beneath front seat.

B.S.A.



TWO-SEATER.

B.S.A. TWO-SEATER.

- UPHOLSTERY .. In dark blue leather cloth. Cushions and backs stuffed with selected horsehair, comfortable in profile and well sprung. Fibre mats on front floorboards.
- FINISHING Metal fittings plated to match chassis. Instrument board, with map box. Licence holder.
- HOOD Balanced one-man type. When erected front of hood clamps to top moulding of windscreen. Complete side screens.
- WINDSCREEN .. Lower part fixed, upper part adjustable.
- CONSTRUCTION .. Framed in ash, panelled in aluminium. Steel wings. Platform steps covered with aluminium. Steel valances.
- PAINTING In grey. Polished bonnet. Black wings, valances, tank, and wheels.
- TOOL SPACE .. Beneath front seat.

SEATING PLANS FOR DAIMLER LANDAUULETTES.

(N.B.—The plan relating to this specification is marked "X").



CHAIR SEATS.



PILLAR SEATS.



DROP SEATS.

Chair seats are mounted on revolving supports so that the occupant can face forward or in any desired position.

Pillar seats are mounted on fixed supports and can be arranged to face either forward or backward as required.

They have arm rests that fold with the seat.

Drop seats are fixed to the partition against which they fold when not in use. They face backward only, and have folding side rests.

FITTINGS FOR LANDAULETTES.

All Daimler landaulettes are built on steel body frames, and the metal fittings are plated to match the chassis. Ash tray, licence holder, step mats and private locks included.

All DE LUXE landaulettes include: Silk laces and pillar pulls; silk blinds; arm slings; speaking tube; ascending handle; roof lamp; enclosed landaulettes include driving mirror. (*N.B.* These items are omitted from landaulettes specified plain finish.)

The following extras can be supplied if required:—

	£	s.	d.		£	s.	d.		£	s.	d.
Second Ash Tray	1	10	0	Telephone (Dictagraph)	12	0	0	Monograms (pair) .. from	2	2	0
Pillar Pulls, per pair	2	10	0	Interior Clock	6	0	0	Clock on instrument board (flush)	5	5	0
Arm Slings, per pair	3	3	0	Cigar Lighter (electric)	2	0	0	Windscreen Cleaner (hand) ..	1	0	0
Silk Blinds, per set, from ..	17	0	0	Canteen (Lady's) .. from	2	10	0	" " (automatic) ..	6	6	0
Driving Mirror (outside) ..	1	15	0	Flower Vase from	2	0	0	Inspection Lamp	1	5	0
Speaking Tube, from	3	10	0	Hat Net	1	15	0	Triplex Glass:—			
Luggage Rail on roof	7	10	0	Parcel Net	2	2	0	Windscreen only .. from	6	0	0
Curtains to driver's seat.. from	10	0	0	Hat and Parcel Net combined..	2	10	0	Landaulette complete .. from	32	0	0
Upholstery Covers (rear only) from	13	10	0	Crests (pair) from	4	4	0	Enclosed ,, ,, .. from	38	0	0

DAIMLER CHASSIS - FINISH AND FITTINGS.

Standard finish—Nickel-plated fittings, except 45h.p. models, which are silver-plated.

Daimler chassis are equipped with—

Electric starter. Five lamps and dash lamp. Two horns. Speedometer. Guard on petrol tank. Spare wheel and tyre, with carrier. Body frame and coachbuilders' fittings (see chassis specification). Complete tool kit.
Low-pressure tyres included on L1 16h.p.

The following extras can be supplied with chassis if required—

				Second Spare Wheel and Tyre.			
				<i>With Carrier. Approximate only.</i>			
		Luggage Grid.	Spring Gaiters.				
45, 30, 21h.p.	£10 0 0	£8 0 0	45h.p. . .	£25	25, 20h.p. (C,S)	£17
				30, 21h.p. . .	£22	25, 20h.p. (T)	£20
35, 25, 20, 16h.p. from	£8 0 0	£5 15 0	35h.p. . .	£20	16h.p.	£15
Low-pressure tyres on S35, 25h.p.; per set of five Dunlop 34 × 7.3				£5 0 0			
" " on S20h.p. " " " "				£17 17 6			

Tool Kit.

(Subject to variation to suit chassis type.)

Spanners: five ($\frac{3}{8}$ in. to $\frac{1}{2}$ in.), two adjustable, five box; footprint; igniter spanner and wheel spanner; jack; pump, with gauge; three tyre levers; plunger oil can; super grease gun; damper oil gun; hammer; chisel; two screwdrivers; cutting pliers; wire wheel brush; petrol funnel; sponge cloth; two lamp bulbs; box of small spares; packet of joints; starting handle.

DAIMLER CHASSIS DETAIL.

(See separate table for all dimensions.)

Engine.—Daimler (patented) silent sleeve-valve with non-pinking pocketless combustion chambers. Six cylinders. Seven-bearing crankshaft fitted with Daimler vibration damper (Lanchester patent). Daimler ferrolite alloy pistons.

Carburettor.—Daimler automatic multiple-jet, heated, with primer for easy starting. Slow-running adjustment. Hot and cold air shutter.

Cooling.—Hand-controlled water-valve to obtain most economic temperature. Syphon pipes to drain cylinder heads.

Engine Controls.—"Economy lever" controlling primer, petrol valve, and water temperature. Ignition lever. Hand-controlled throttle-stop. Foot accelerator.

Bonnet.—Double-panelled, with top and sides opening.

Clutch.—Light plate type, for easy gear-changing.

Back Axle.—Daimler-Lanchester worm. Prototype tested by National Physical Laboratory to give from 95% to 97% efficiency under all circumstances.

Transmission and Suspension.—Daimler system, giving resilient transmission through double-jointed propeller shaft and semi-elliptic springs.

Brakes.—Service brake operated by foot, acts directly on the road wheels. Single-point adjustment (patented) accessible from the bonnet. Independent hand brake on drum behind gear-box, acts through transmission. All brakes are of the internal-expanding type, with die-pressed fabric lined shoes.

Frames.—Separate steel body frame.

Wheels.—Five B.S.A. detachable wire wheels. Spare-wheel carrier fixed to chassis frame and carries the wheel by the hub.

Tyres.—Five Dunlop Cord.

Electrical Equipment and Lamps.—12-volt battery, charged by self-regulating dynamo. Automatic cut-out.

Electric Starter.—Operating through gear-ring on flywheel. Press-button switch.

Lamps.—Head lamps, wing lamps, tail lamp, and dash lamp.

Speedometer.

Horns.—Two.

Tool Kit.—Full equipment.

Petrol Supply.—Tank at rear of chassis. Guard fitted to tank. Hand-operated filler cap.

Chassis Lubrication.—Fitted for grease gun.

Coachbuilders' Fittings.—Chassis supplied separately have the following attachments for the convenience of the coachbuilders:—

Body frame.

Bonnet.

Stumps and sockets for front wings.

Brackets for stepboards.

Brackets for head lamps and tail lamp.

Electrical connections for body wiring where required.

Attachments for body frame.

Number plates (painted black).

Steering.—Chassis supplied separately can have the steering column set in the high or low-rake position as required.

B.S.A. CHASSIS (DAIMLER ENGINE) FINISH AND FITTINGS.

Standard finish: nickel-plated fittings.

B.S.A. chassis (Daimler engine) are equipped with—

Electric starter. Three lamps (five on L2 16h.p.). One electric horn. Speedometer. Spare wheel and tyre. Coachbuilders' fittings (see chassis detail). Complete tool kit. Spring gaiters (on E and F chassis only).

The following extras can be supplied with chassis if required:—

Luggage Grid (D, E, and L chassis only), £8. Spring Gaiters (D and L2 chassis only), £5 15s.
Painted Numbers, 7s. 6d.; Aluminium Numbers, £1 10s.

Tool Kit.

(Subject to variation to suit chassis type.)

Spanners: five ($\frac{1}{8}$ in. to $\frac{3}{4}$ in.), one adjustable, three box; igniter spanner; wheel brace; jack; pump; two tyre levers; plunger oil can; grease gun; damper oil gun; hammer; two screwdrivers; pair of cutting pliers; petrol funnel; starting handle; box of spares; packet of joints.

B.S.A. (Daimler Engine) CHASSIS DETAIL.

Engine.—Daimler (patented) silent sleeve-valve with non-pinking pocketless combustion chamber. Crankshaft with bearing between each crank and fitted with Daimler vibration damper (Lanchester patent). Daimler ferrolite alloy pistons.

Carburettor.—Daimler automatic multiple-jet, heated, with primer for easy starting. Slow-running adjustment. Hot and cold air shutter.

Ignition.—Battery.

Cooling.—Hand-controlled water-valve to obtain most economic temperature. Siphon pipes to drain cylinder heads.

Engine Controls.—"Economy lever" controlling primer, petrol valve, and water temperature. Ignition lever. Foot accelerator.

Clutch.—Light plate type for easy gear-changing.

Back Axle.—Daimler-Lanchester worm. Prototype tested by National Physical Laboratory to give from 93% to 97% efficiency under all circumstances.

Brakes.—Service brake, operated by foot, acts directly on rear road wheels. Single point adjustment accessible from the bonnet. All brakes are of the internal-expanding type, with die-pressed fabric lined shoes.

Wheels.—Five detachable disc wheels.

Tyres.—Five Dunlop Cord.

Electrical Equipment and Lamps.—12-volt battery, charged by self-regulating dynamo. Automatic cut-out.

Electric Starter.—Operating through gear-ring on flywheel. Press-button switch.

Lamps.—Two front lamps and tail lamp.

Switchboard.—Ammeter (charge and discharge). Red warning lamp.

Speedometer.

Horns.—One electric.

Tool Kit.—Full equipment.

Chassis Lubrication.—Fitted for grease gun.

Coachbuilders' Fittings.—Chassis supplied separately have the following attachments for the convenience of the coachbuilders:—

Body frame and attachments for types D and Lc.

Bonnet.

Attachments for wings.

Brackets for stepboards.

Electrical connections for body wiring where required.

Number plates (painted black).

10h.p. B.S.A. CHASSIS — FINISH AND FITTINGS.

Standard finish: nickel-plated fittings.

The 10h.p. B.S.A. chassis is equipped with—

Electric starter. Three lamps. One electric horn. Speedometer. Spare wheel and tyre. Coachbuilders' fittings (see chassis detail). Complete tool kit. Spring gaiters.

Tool Kit.

Spanners: five ($\frac{1}{2}$ in. to $\frac{3}{4}$ in.), one adjustable, three box; igniter spanner; wheel brace; jack; pump; two tyre levers; hammer; pair of cutting pliers; two screwdrivers; petrol funnel; oil filler; plunger oil can; grease gun; valve lifter and grinding tool; box of spares; starting handle.

THE 10h.p. B.S.A. CHASSIS DETAIL.

(See separate table for all dimensions.)

Engine.—B.S.A. 90° Vee twin. Air cooled. Overhead valves. Balanced crank-shaft supported on ball bearings. Roller bearings in connecting-rod big ends. Aluminium alloy pistons.

Carburettor—Zenith. Heated, with air choke for easy starting.

Ignition—Battery.

Engine Controls—Ignition lever. Foot accelerator.

Clutch.—Light plate type for easy gear-changing.

Back Axle.—Daimler-Lanchester worm. Prototype tested by National Physical Laboratory to give from 93% to 97% efficiency under all circumstances.

Transmission and Suspension.—Enclosed propeller shaft and quarter elliptic springs.

Brakes.—Service brake, operated by foot, acts on rear road wheels. Single point adjustment accessible from the bonnet. Independent hand brake also acts on rear wheels. All brakes are of the internal-expanding type, with die-pressed fabric-lined shoes.

Springs.—Quarter-elliptic front and rear. Spring gaiters.

Wheels.—Five B.S.A. detachable disc wheels. Spare wheel carried on step.

Tyres.—Five Dunlop Cord.

Electric Equipment and Lamps.—6-volt battery, charged by self-regulating dynamo. Automatic cut-out.

Electric Starter—Operating through gear-ring on flywheel. Press-button switch.

Lamps—Two front lamps and tail lamp.

Switchboard—Ammeter (charge and discharge). Red warning lamp.

Speedometer.—Driven from patented enclosed drive on front hub. Mileage and trip recorder.

Horns.—One electric.

Tool Kit.—Full equipment.

Petrol Supply.—Gravity-feed from tank in dash. Hand-operated filler cap.

Chassis Lubrication.—Fitted for grease gun.

Finish and Fittings.—See separate page.

Coachbuilders' Fittings.—Chassis supplied separately have the following attachments for the convenience of the coachbuilders:—

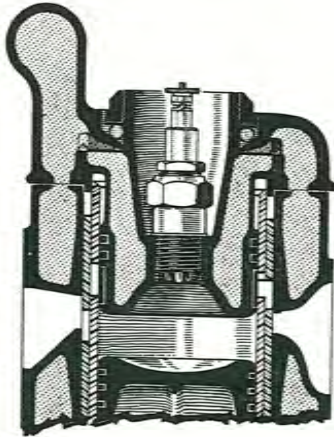
Bonnet.

Frame drilled for attachment of front wings.

Brackets for stepboards.

Number plates (painted black).

THE DAIMLER ENGINE.



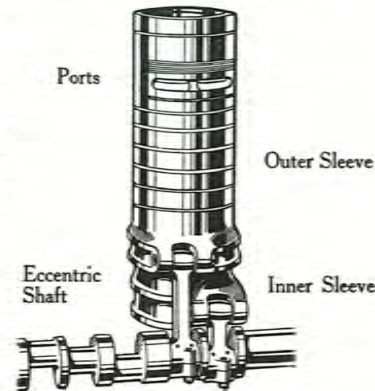
The Pocketless Combustion Chamber.

cylinder engines, noted for their smooth action under every condition, are fitted to all Daimler chassis.

For further particulars of the Daimler engine and other special features of the chassis see separate booklet, which will be sent on request.

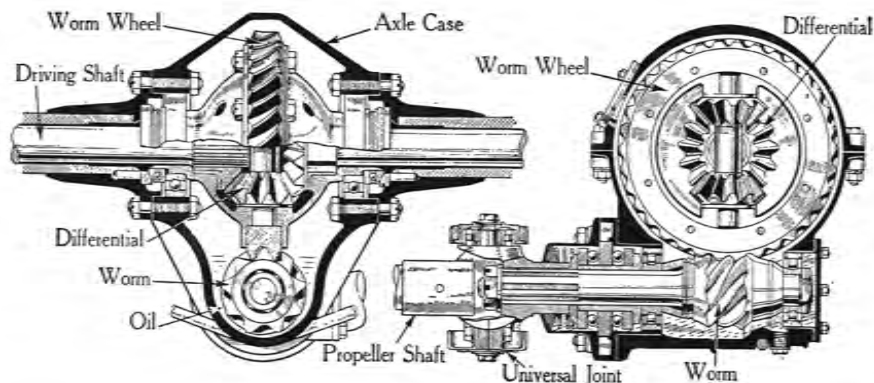
ACTING continuously in sliding contact, the sleeve-valves of the Daimler engine are inherently silent and thus naturally remain so. They require no adjustment, nor do they have to be "ground in." There are no valve heads to corrode and no springs to break. The pocketless combustion chamber (illustrated in section on the left) is a most important feature of the sleeve-valve engine, rendering it free from the prevalent complaint of "pinking."

The enduring silence and long service of the Daimler engine are its greatest features and the foundation of its economy to the owner. Six-



THE DAIMLER AXLE.

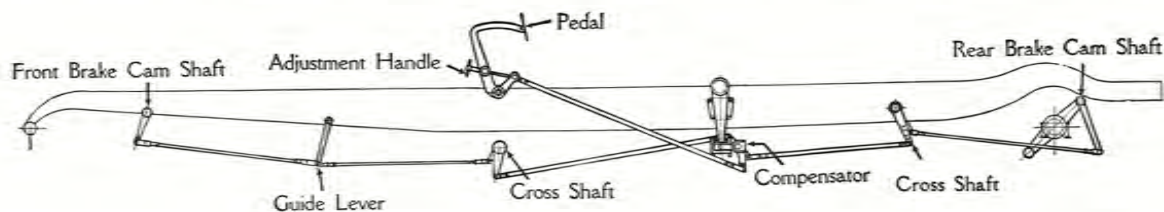
ACTING continuously with its worm and wheel in sliding contact, the worm-gear is the most silent method of transmitting power to the back axle.



Self-lubricated by a quality of its own motion which most effectively maintains a film of oil between its metal surfaces, the Daimler worm-gear is also a mechanism of the highest efficiency.

Tested by the National Physical Laboratory, it has been certified to transmit "from 93 to 97% of the power under all circumstances." Wear does not affect its efficiency or silence.

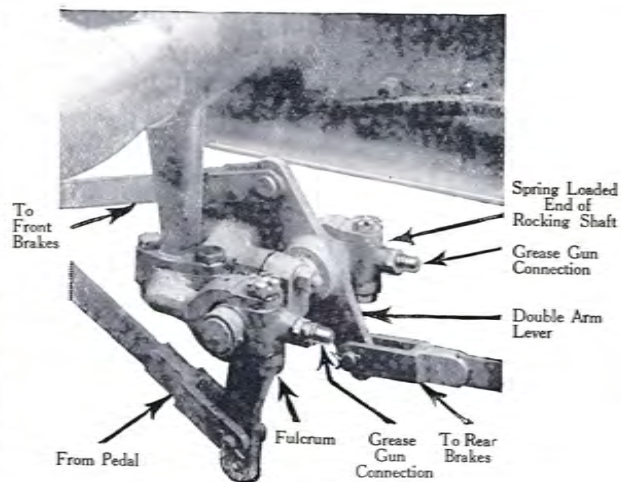
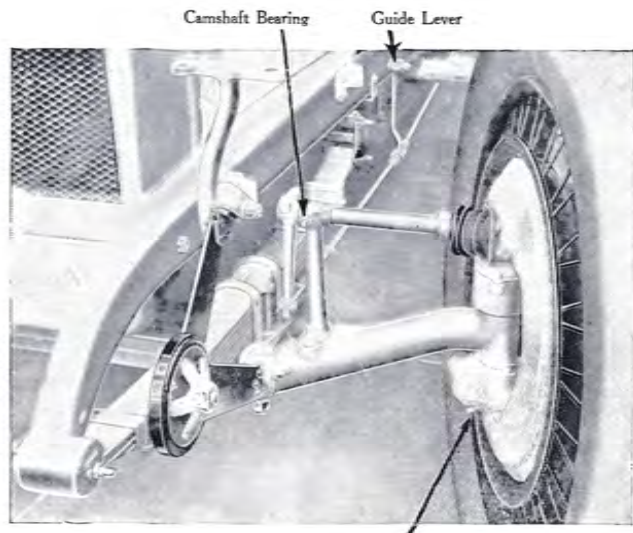
THE DAIMLER SINGLE-ADJUSTMENT FOUR-WHEEL BRAKES.



ON Daimler cars fitted with this system the foot brake is applied by foot and operates directly on all four wheels. It gives exceptional steadiness in the control of the car, combined with freedom from skidding in wet weather and a large reserve of capacity to use abnormal pressure on the pedal in emergency.

An unique feature of the system is a patented compensating device whereby a single adjustment takes up the wear of the brakes without disturbing their correct setting. To the user this is a most important feature, because the individual adjustment of four brakes that are not suitably compensated is a difficult and tiresome procedure. The Daimler single adjustment is particularly convenient, being situated under the bonnet (see *diagram above*).

The shafts operating the front brakes are supported upon the axle, experience having shown this to be the best position. The universal joints are enclosed by leather covers. The greater part of the brake drum lies in the plane of the wheel, a feature which has important mechanical advantages and gives the Daimler front brakes an exceptionally neat appearance (see *illustration overleaf*).

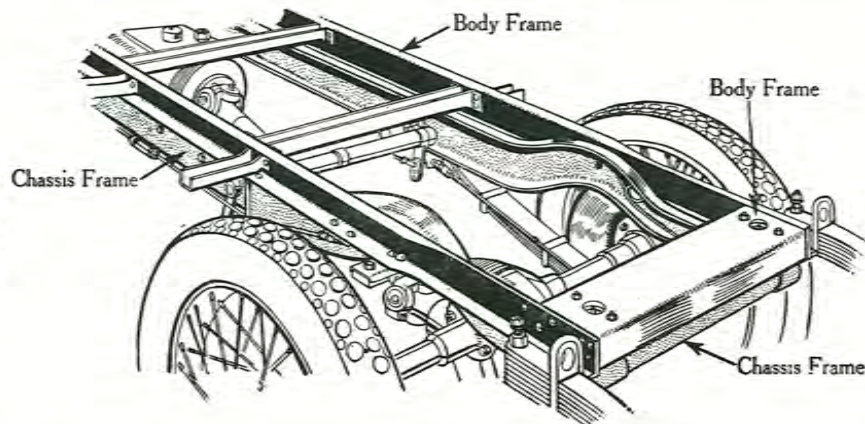


Photographs of the front brake (left) and compensator (right) in the Daimler four-wheel brake system. The compensator permits all four brakes to be simultaneously adjusted by a handle that is accessible under the bonnet (see diagram on previous page). The neat appearance of the brakes is due to the special design of wheel, which permits the greater part of the brake drum to be situated in the same plane.

THE DAIMLER BODY MOUNTING.

THE Daimler body mounting is designed to give exceptional comfort to the passengers and to increase the durability of the coachwork by insulating the body from the chassis. The body is built on an independent steel frame, which becomes an integral part of the coachwork. It confers great strength

Sketch of the Daimler body mounting showing the independent steel frame on which the body is built. The body, thus strengthened, is hinged to the chassis in front and carried on rubber buffers behind.



and rigidity on the body and also saves weight. By its aid the body can be safely insulated from the chassis in the sense that it is only fastened by hinges in front and supported on rubber buffers behind. In this way the coachwork is protected from the severer strains to which the chassis itself is inevitably subjected on rough roads and the passengers also ride in greater comfort.



SUMMARY OF DAIMLER CHASSIS PRICES AND SPECIFICATIONS.

THE Daimler chassis are grouped according to the nominal h.p. by which they are well known to the public. In each group there are two or more alternative models differing in respect to some important feature such as four-wheel brakes, body space, low entrance frame, or wider track (to suit low-pressure tyres if required). Chassis can only be fitted with Daimler coachwork identified by the body type letter attached to each chassis price.

All Daimler chassis sold separately are supplied with steel body frames on which it is requested that the coachwork should be built, so as to ensure the many benefits that accrue from this patented system of construction and mounting.

45h.p.	{	Engine rating, 45h.p.	A	£1225
		Engine and chassis as above, but with four-wheel brakes	A	£1275
		Low entrance frame and engine of 51.36h.p. rating. Four-wheel brakes. Polished radiator	R	£1325
		Extra long frame chassis to take the largest coachwork. Specification as above	N	£1400
30h.p.	{	Engine rating, 30.13h.p.	A	£950
		With four-wheel brakes	A	£975
		Low entrance frame and engine of 35h.p. rating. Four-wheel brakes. Polished radiator	R	£1000
		The same, with long chassis	N	£1050
21h.p.	{	Engine rating, 20.9h.p.	A	£700
		With four-wheel brakes	A ¹	£725
		Engine rating, 24.7h.p. Four-wheel brakes	A ²	£740

SUMMARY OF DAIMLER CHASSIS PRICES AND SPECIFICATIONS—continued.

35h.p.	{	Engine rating, 35h.p.	Four-wheel brakes.	Polished radiator	C	£900	
		Wide track chassis.	Low-pressure tyres (extra) if required	S	£900		
		The same, with long chassis to suit landaulettes and larger coachwork	T	£925			
25h.p.	{	Engine rating, 24.7h.p.	C	£650	
		Four-wheel brakes.	Wide track chassis.	Low-pressure tyres (extra) if required.	Polished radiator	..	S	£675
		The same, with long chassis for landaulettes	T	£700	
20h.p.	{	Engine rating, 20.02 h.p.	C	£550	
		Four-wheel brakes.	Wide track chassis.	Low-pressure tyres (extra) if required.	Polished radiator	..	S	£575
		The same, with long chassis for landaulettes	T	£600	
16h.p.	{	Engine rating, 15.7h.p.	Four speeds	D	£425	
		Four-wheel brakes.	Wide track chassis, fitted with low-pressure tyres.	Three speeds.	Polished radiator	..	L ¹	£450

SUMMARY OF DAIMLER BODY PRICES AND SPECIFICATIONS.

LANDAULETTES DE LUXE for the 45, 30, and 21h.p. chassis.

“A”	{	Enclosed front. Two chair seats in the middle, fully upholstered and mounted on revolving supports so that the occupants can face forward or in any position desired. The seats of these chairs can be tilted when not in use or the entire chair can be removed from its socket if not required	£650
		Open front, specification otherwise as above	£600
		Enclosed front landaulette of smaller dimensions than the above. Two “drop seats” are attached to the partition against which they fold when not in use. These seats have folding side rests that open against the doors ..	£550
		Open front landaulette to the above specification	£500
“R”	{	Enclosed front. Two chair seats in the middle. This body has a special low entrance. The enclosed front, which not only provides all-weather accommodation for an extra passenger, but permits the owner to drive, is improved in comfort on this model	£675
		Open front, but with other improvements as above	£625
		Enclosed front landaulette of smaller dimensions than the above. With “pillar seats” in the middle. These are folding seats with arm rests, and can be attached either to the door pillar, where they can face forward, or to the partition, where they face backward. Low entrance and improved driver’s seat as above	£575
		Open front, with middle seats and specification as above	£525
“N”	{	This is the largest landaulette that is made, and is a body of such perfect proportions that the much-improved roominess of the accommodation in no way detracts from the graceful appearance of the car. It has an enclosed front, chair seats, low entrance, and every improvement	£850

SUMMARY OF DAIMLER BODY PRICES AND SPECIFICATIONS—continued.

LANDAULETTES DE LUXE for the 35, 25, and 20h.p. chassis.

"T"	{	Enclosed front. "Pillar seats." Low entrance	£550
		Open front to the above specification	£500
		Enclosed front landaulette of smaller dimensions than the above. "Drop seats."	£475
		Open front to the above specification	£425

SALOONS DE LUXE for the 35, 25, and 20h.p. chassis.

These bodies are in every way equal to the landaulettes de luxe in construction and finish.

"C"	V front. Four doors. Chair seats in front, driver's seat adjustable	£400
"S"	V front. Four doors. Chair seats in front, driver's seat adjustable	£400

SALOONS DE LUXE for the 16h.p. chassis.

"D"	Smaller model of the same design as "C"	£300
"L"	Specification as above	£340

SUMMARY OF DAIMLER BODY PRICES AND SPECIFICATIONS—continued.

SALOONS (metal panelled) for the 35, 25, and 20h.p. chassis.

"C"	V front. Four doors. Chair seats in front, driver's seat adjustable.	£250
"S"	Specification as above	£250

SALOONS for the 16h.p. chassis.

"D"	Smaller model, similar to "C" above	£210
"L"	Specification as above	£210

SALOONS "Z" (fabric panelled) for the 35, 25, and 20h.p. chassis.

"C"	V front. Four doors. Chair seats in front, driver's seat adjustable	£250
"S"	Specification as above	£250

SALOONS "Z" for the 16h.p. chassis.

"D"	Smaller model, flat front. Otherwise similar to "C" above	£160
"L"	Specification as above	£160

SUMMARY OF DAIMLER BODY PRICES AND SPECIFICATIONS—continued.

OPEN CARS for the 35, 25, and 20h.p. chassis.

"C"	{ Open body, completely equipped with divided windscreen, side screens, hood, and hood cover. Four doors with step mats to each. Fibre mats on floorboards	£200
"S"	Specification as above	£200

OPEN CARS for the 16h.p. chassis.

"D"	Open body, with full equipment as above	£150
"L"	Specification as above	£150

TWO-SEATER for the 16h.p. chassis.

"L"	Fully equipped with large comfortably upholstered dickey	£125
-----	--	------

SUMMARY OF B.S.A. CHASSIS PRICES AND SPECIFICATIONS.

16h.p.	{	Daimler six-cylinder sleeve-valve engine. Rating, 15.7h.p. Quarter-elliptic springs. Both brakes act direct on rear wheels. Body (type "E") fixed direct to chassis	£325
	{	Engine as above. Resilient transmission through double-jointed propeller shaft and semi-elliptic springs. Foot brake acts on rear wheels. Hand brake acts on transmission. Body (type "D") built on independent steel frame	£335
	{	The same with wider track and low-pressure tyres. Body (type "L") built on independent steel frame	£350
14h.p.	{	Four-cylinder Daimler engine. Rating, 13.4h.p. Quarter-elliptic springs. Both brakes act direct on rear wheels. Body (type "E") fixed direct to chassis	£265
	{	Short chassis. Engine rating and specification otherwise as above. Body (type "F") fixed direct to chassis	£250
10h.p.		Short chassis similar to above specification. B.S.A. two-cylinder air-cooled engine. Rating, 9.99h.p.	£180

N.B.—All B.S.A. chassis are fitted with Daimler high-efficiency worm-driven back axle.



B.S.A. BODY PRICES.

SALOONS (metal panelled) for the 16h.p. chassis.

"E"	V front. Four doors. Chair seats in front, driver's seat adjustable	£175
"D"	Larger body built on steel body frame. Specification otherwise as above	£200
"L"	Specification as above	£200

SALOONS for the 14h.p. chassis.

	Specification as "E" above	£150
--	------------------------------------	------

SALOONS "Z" (fabric panelled) for the 16h.p. chassis.

"E"	Flat fronted. Specification otherwise as metal panelled type	£150
"D"	Body built on steel body frame. Specification otherwise as above	£150
"L"	Specification as above	£150

SALOONS "Z" for the 14h.p. chassis.

"E"	Specification as "E" above	£150
-----	------------------------------------	------

*B.S.A. BODY PRICES—continued.**OPEN CARS for the 16h.p. chassis.*

"E"	Completely equipped with divided windscreen, side screens, and hood	£140
"D"	Body built on steel body frame. Specification otherwise as above	£140
"L"	Specification as above	£140

OPEN CARS for the 14h.p. chassis.

"E"	Specification as "E" above	£120
-----	------------------------------------	------

TWO-SEATER for the 14h.p. (short) and 10h.p. chassis.

"F"	Large comfortable front seat. Upholstered dickey. Side-screens included	£60
-----	---	-----

SMALL FOUR to fit the 14h.p. (short) and 10h.p. chassis.

"F"	{ Large comfortable front seat, folding back for access to rear seat, which is upholstered and protected by the hood. Side screens included	£60
-----	---	-----

TABLE OF DAIMLER CHASSIS PRICES.

45 H.P.	30 H.P.	21 H.P.	35 H.P.	25 H.P.	20 H.P.	16 H.P.
A £1225	A £950	A £700	C £900	C £650	C £550	D £425
A 1275	A 975	A ₁ 725	S 900	S 675	S 575	
R 1325	R 1000	A ₂ 740	T 925	T 700	T 600	L: 450
N 1400	N 1050					

N.B.—Chassis can only be fitted with bodies identified by the body type letter attached to each price.

TABLE OF DAIMLER BODY PRICES.

DAIMLER LANDAULETTES DE LUXE.					DAIMLER SALOONS AND OPEN CARS.							
Body type letter	N	R	A	T	C	S	D	L		
<i>With chair seats.</i>												
ENCLOSED FRONT	-	£850	675*	650*	—	—	SALOON	- - -	£250	250	210	210
OPEN FRONT	- - -	—	625*	600*	—	—	SALOON "Z"	-	250	250	160	160
<i>With pillar seats.</i>												
ENCLOSED FRONT	-	—	575	—	550	—	SALOON DE LUXE	400	400	300	340	
OPEN FRONT	- - -	—	525	—	500	—						
<i>With drop seats.</i>												
ENCLOSED FRONT	-	—	—	550	475	—	OPEN CAR	- -	200	200	150	150
OPEN FRONT	- - -	—	—	500†	425†	—	TWO-SEATER	-	—	—	—	125

N.B.—* Limousines are available in these types at £50 extra. † A plain finish model is available in these types at £25 less.



B.S.A. CAR PRICES.

CHASSIS.	BODY TYPE.	OPEN CARS.	SALOONS.	
			("Z" FABRIC PANELLED)	(METAL PANELLED).
16 H.P.	E	£465	£475	£500
	D	475	485	535
	L	490	500	550
14 H.P.	E	£385	415	415
<i>TWO-SEATERS AND SMALL FOURS.</i>				
	BODY TYPE F . .	14 H.P. . .	CHASSIS. £250	CAR. £310
		10 H.P. . .	180	240





